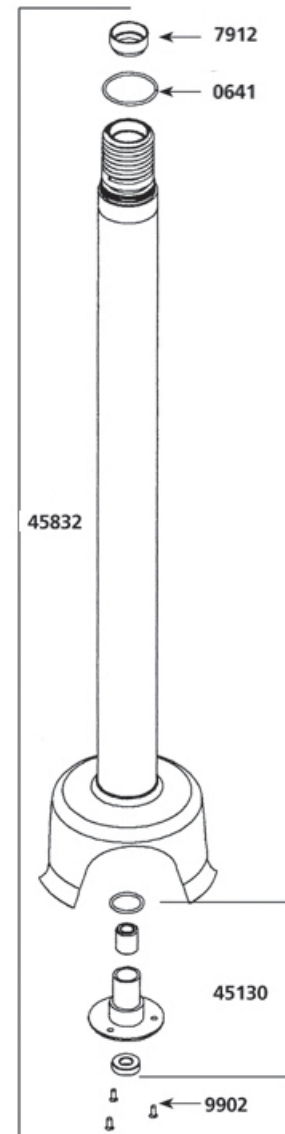


Mail to: P.O. Box 1690, Pleasanton, CA 94566

Ship to: 440 Boulder Court, Suite 100C, Pleasanton, CA 94566

Dynamic Mixer SMX800DSC Parts

0529	Brushes (pair)	14.51
0601	Bearing	12.93
0602	Motor Bearing	15.00
0641	O ring seal	2.68
0760	Spring	2.89
0776	Clips	1.10
0777	Washer & Bolt for Fan	1.12
0862	Wall bracket	18.92
0950	Strain relief bushing	2.26
0950.1	Strain relief bushing	2.26
1185	Support Lower Ring	20.81
45125	Fan Housing Aluminum	126.75
45125P	Fan Housing Plastic	128.60
45126	Insulator	14.61
45130	Lower Bearing Assembly	32.78
45132	Lower Motor Casing	66.61
45133	Upper Motor Casing	66.61
45135	Stator - Motor Field (230v)	348.28
45135.1	Stator - Motor Field (115v)	348.28
45136	Rotor (230v)	348.28
45136.1	Rotor (115v)	348.28
45137	Screw for Motor Field	2.51
45138	Spacers (4)	15.12
45139	Spacers Screws (4)	2.63
45161	Cutter Blade	37.72
45230	Pressure bushing(4)	5.59
45610	Handle Cap(2)	5.50
45620.1	Microswitch	118.40
45630.1	Regulation circuit board	122.53
45633DSC	Plastic Fan	15.15
45706	Top Switch Housing	18.07
45706.1	Screws control case set	1.89
45707	Lower Switch Housing	16.61
45708	Lock Button Cover	2.96
45709DSC	Top Motor Housing	200.76
45710	Switch Button Cover	2.81
45711	Lower Housing with Screw	32.08
45712.1	Complete control casing (115v)	397.00
45831	Lower Motor Housing	311.26
45832	Foot Assembly	357.97
45833	Shaft and Bearing	141.00
45834	Kit w/ Shaft Lower Bearing	229.68
45835	Rotor Armature (230v)	346.00
45835.1	Rotor Armature (115v)	346.00
45840	Complete Foot Assembly	538.82
7912	Motor bearing sleeve	3.42
9028	Sprocket - Shaft	8.60
9040.1	Power Cord (115v)	32.52
9051	Sprocket - Armature	13.67
9902	Lower bearing screws (3)	1.06



Dynamic Mixer SMX800DSC Parts

