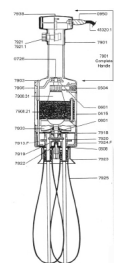
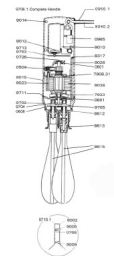
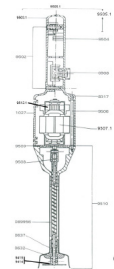
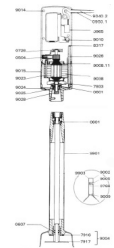


Mail to: P.O. Box 1690, Pleasanton, CA 94566

Ship to: 440 Boulder Court, Suite 100C, Pleasanton, CA 94566

Dynamic Mixer Parts List 2012

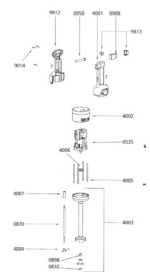
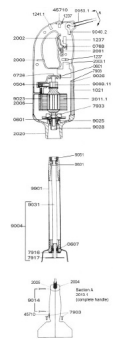
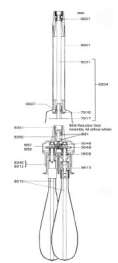
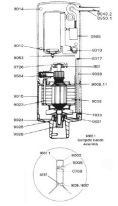
0415	Sleeve	31.56
0420	Pulp Filter	16.49
0504	Motor brushes (pair)	13.32
0509	Fan	9.07
0514	Motor brushes (pair)	13.32
0518	Motor (115v)	1,674.03
0529	Brushes (pair)	14.95
0535.1	Motor - Junior (115v)	158.24
0535.3	Motor - Junior Whisk (115v)	195.00
0550	Emulsifying blade	14.29
0551	Standard blade with screws	14.29
0552	Batter blade with Screen	14.29
0553	Smoothie emulsifying blade with screen	14.29
0601	Bearing	13.32
0602	Motor Bearing	15.45
0603	Bushing	3.09
0604	Bushing	1.90
0607	Double lip waterproof seal	17.37
0608	Waterproof seal	17.85
0609	Waterproof Seal	15.52
0610	O. ring	1.87
0611	O ring	1.87
0617	Waterproof Seal	22.84
0620	Waterproof Seal	76.93
0621	Lower or Upper Bearing	36.62
0625	Transmission Belt	143.62
0631	Bushing	1.69
0632	Waterproof seal	8.09
0635	Pins 2x10	0.44
0637	Bushing	1.79
0638	Pin for gear	0.50
0641	O ring seal	2.76
0642	Self lubricating ring	1.92
0644	waterproof seal	2.51
0646	O ring	2.51
0647	D15 bearing	18.84
0648	waterproof seal	3.28
0701	Tightening Knob	13.85
0702	Handle screws (3)	0.70
0707	Tightening Knob	12.12
0713	Bolt	1.87
0720	Handle Screw	1.87
0726	Motor bearing Spring	1.87
0744	Pins 3 x 20	2.08
0745	Pin 3 x 14	1.87
0748	Stopper	2.62
0760	Spring	2.98
0766	Open Head Locking Washer	1.29



Mail to: P.O. Box 1690, Pleasanton, CA 94566

Ship to: 440 Boulder Court, Suite 100C, Pleasanton, CA 94566

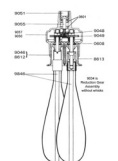
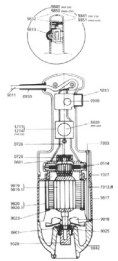
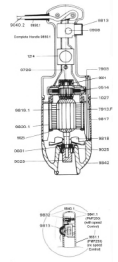
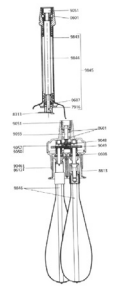
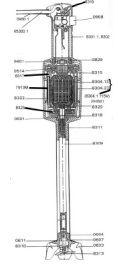
0767	Lock button return spring	3.94
0768	Safety button return spring	3.68
0769	M4 washer	1.38
0776	Clips	1.13
0777	Washer & Bolt for Fan	1.15
0782	Handle	18.63
0784	Forks Break Nut	2.35
0787	Friction Washer	2.45
0790	Plastic Handle	44.17
0799.29	Motor Screw (1)	1.17
079917	Motor Housing Screws	0.72
079958	Cover or Handle Screws 2	1.90
079959	Circular clips	1.87
0829	Motor bushing	20.18
0830	Rubber Washer	13.16
0833	Blade protector (Stainless)	83.50
0834	Blade	89.51
0835	Pusher Blade	116.48
0836	Friction washer	13.43
0837	Enter gear	38.72
0837A	Entry Gear	27.78
0842	Ricer Grid/Blade Protector	163.07
0860	Bracket Stainless	7.29
0862	Wall bracket	19.49
0863	Bracket	7.29
0870	Stainless Steel Shaft	34.44
0871	Grid	110.97
0880	Wall bracket	7.74
0880.1	Non locking switch	68.47
0881	Wall bracket	7.78
0881.L	wall bracket - mx - long	9.50
0892	Shaft	12.31
0894	Blade protector	83.10
0898	Bearing Housing Only	15.39
089914	Pole	623.81
089915	Hood Pole	213.07
089931	Side Hood	12.51
089947	Upper Driving Shaft	28.84
089948	Axle 8x40	7.07
089949	Lower Blade	41.81
089950	Upper Blade	41.81
089956	Complete shaft stainles	20.25
089959	Wall Bracket	19.44
089972	Gear and pin	36.64
0903	Toggle Switch	16.35
0905	Switch	19.57
0905.1	Switch Protector	5.38
0907	Locking Switch	26.81
0908	Non-locking switch	27.88
0909	Capacitor	11.79



Mail to: P.O. Box 1690, Pleasanton, CA 94566

Ship to: 440 Boulder Court, Suite 100C, Pleasanton, CA 94566

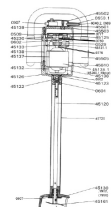
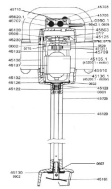
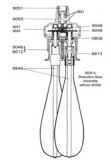
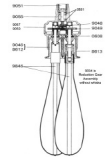
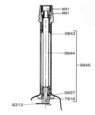
0950	Strain relief bushing	2.33
0950.1	Strain relief bushing	2.33
0965	Switch (115v)	35.35
0967	Power Cord (115v)	25.87
0970	Capacitor (115v)	19.72
0972	Capacitor (115v)	13.17
0972.1	Capacitor and filter (230v)	15.25
0981	Magnetic Switch	182.16
0990	Push Button Switch	87.39
0998.1	Switch	23.88
0999.20	Filter	15.00
0999.5	Capacitor	28.41
1008	On/Off Label	2.40
1009	ID Label (115v)	13.10
1017	Warning label	4.68
1019	ID label (115v)	4.86
1021	Dynamic label	11.60
1027	Dynamic Label	11.60
1028	Label w/ serial number (230v)	4.87
1029	Label w/ serial number (115v)	4.87
1031	ID Label (115v)	4.87
1049	ID Label (115v)	13.10
1055	ID label (115v)	4.87
1057	ID Label (115v)	4.87
1060	ID label (115v)	10.20
1063	Label w/ serial number (230v)	4.87
1064	Label w/ serial number (115v)	4.87
1065	Label w/serial number	4.87
1066	Label w/serial number	4.87
1067	Label w/ serial number (230v)	4.80
1068	Label w/ serial number (115v)	4.80
1070	ID Label (115v)	4.80
1071	Label w/serial number	4.87
1072	Label w/serial number	4.87
1074	ID Label (115v)	13.10
1076	ID label (115v)	4.80
1082	Label with Serial Number	4.87
1085	ID Label (Junior Plus)	5.00
1087	ID Label (Junior combi)	5.00
1097	ID Label (115v)	4.78
1099.11	Label w/ serial number (115v)	4.97
109913	ID Label (230v)	4.99
109914	ID Label (115v)	4.99
1185	Support Lower Bearing - SMX	21.43
1186	Support Lower Bearing - MX	20.00
1189	Support Lower Bearing - PMX	20.00
1190	Tray	26.23
1213	Variable control w/button (230v)	92.29
1214	Variable control w/button (115v)	80.19
1237	Switch	10.39



Mail to: P.O. Box 1690, Pleasanton, CA 94566

Ship to: 440 Boulder Court, Suite 100C, Pleasanton, CA 94566

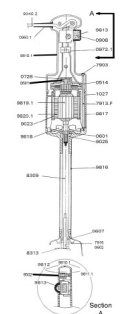
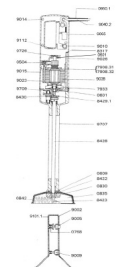
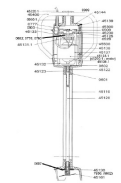
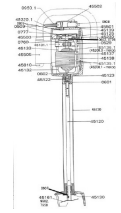
1241	Power on indicator light	5.68
1241.1	Power on indicator light	5.68
1801	Outside Basket	95.06
1802	Inside Basket	75.48
1803	Complete Cover	139.63
1804	Cover w/o Small Cover	44.52
1809	Handle Only	44.00
1810	Bearing Pin	8.03
1812	Handle Assembly complete	121.80
1814	Inside Basket bearing	38.32
2001	Control lever	10.04
2002	Safety control lever	5.96
2003	Micro switch interrupt	116.95
2003.1	Circuit board (115v) 4 switches, capacitor	116.95
2003.1DSC	DSC regulation circuit	227.43
2004	Half Handle (MX) Non-Button side	49.99
2005	Half Handle Button Side	50.00
2006	Motor housing brush holder	69.22
2006DSC	Motor housing brush holder	69.82
2007	Complete foot assembly	358.34
2008	Speed control plug	1.92
2009	Foot assembly w/ bearing	250.00
2010	Complete handle w/ power	245.00
2010.1	Complete handle w/ power	245.00
2011.1	Motor field (115v)	192.30
2011.1DSC	Stator (115v)	191.34
2012.1	Power Cord (115v)	27.18
2020	Lower aluminum housing	128.27
2021	Variable Speed Control knob	3.79
2022	Complete Handle (230v)	246.00
2022.1	Complete Handle (115v)	246.00
2023	Variable Speed Control	89.59
2023.1	Variable Speed Controll	89.59
2060.1	Complete handle (115v)	211.14
2061	Sensoring Washer	16.30
2801	Outside Basket	145.49
2803	Complete Cover	199.20
2804	Lid empty (no inner cover)	59.39
2805	Gear Cover only	20.94
2806	Drive Gear with pin	24.72
2806P	Drive Gear with pin	28.25
2808	Small Gear	20.79
2809	Handle Only	47.56
2810	Bearing Pin	8.42
2811	Pin	4.77
2812	Handle Assembly complete	128.30
2813	Axle for Transfer Gears	11.56
2814	Inside Basket Bearing	38.61
2815.1	Set of all 3 Gears	39.21
2815.2	Set of gears (2 x 2806)	69.66



Mail to: P.O. Box 1690, Pleasanton, CA 94566

Ship to: 440 Boulder Court, Suite 100C, Pleasanton, CA 94566

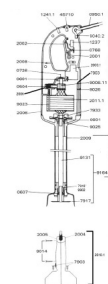
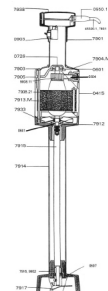
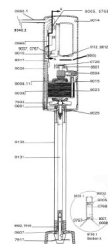
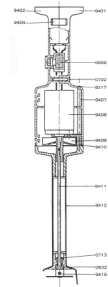
2820	handle only	47.67
2821	Small cover (w/o handle)	21.00
2822	Output small gear	24.09
2823	Equipped cover (O. Ring)	64.54
2824	Coupling sleeve	13.87
2825	Inside basket	89.15
2826	Small cover with handle	131.11
2827	Complete cover	254.86
2828	Plate, screws (x 3)	14.33
2840	Cover	13.41
2841	Hook	7.25
2842	Power Cord	18.73
2843	Right Handle	43.16
2844	Shaft and Sprocket	20.17
2845	Minipro foot assembly, bushing, seal	89.69
2846	Coupling	12.44
2847.1	Motor (115v)	89.23
2848	Dynamic Label	11.55
2849	Left handle	43.40
2850	Scews, washer, handle nuts (2)	2.20
2851	Handle	22.88
2852	Circuit board	57.58
2853.1	ID Label (115v)	4.99
2854	Motor bracket	14.65
2855	Screws for motor bracket	1.87
2856	dynashake food assembly, ring, seal	106.70
2857	Shaft and bearing	28.93
2858	Variator knob	10.69
2859	Driving shaft joint	2.39
2860	Coupling hub	10.21
2861.1	Strain relief (115v)	4.95
3001.1	Motor Housing	38.77
3002	Big Gear	22.99
3003	Gear Housing Protector	7.14
3004.1	Motor (115v with Capacitor)	469.56
3005	Motor Plate	42.23
3006	Small Gear	20.79
3007	Axel Big Gear	11.72
3467	Lower Grid 7mm	98.00
3468	Lower Grid 14mm	98.00
3485	Lower Grid 8.5mm	98.00
3486	Lower Grid 17mm	98.00
3497	Lower Grid 10mm	98.00
3500	Handle Assembly Kit	145.93
3501	Chute	79.86
3504	Cutter Blade	52.91
3504.1	Cutter Blade Plastic Holder	9.30
3505	Bottom Unit	63.52
3506	Top Unit	101.15
3507	Mounting Supports	3.73



Mail to: P.O. Box 1690, Pleasanton, CA 94566

Ship to: 440 Boulder Court, Suite 100C, Pleasanton, CA 94566

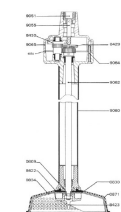
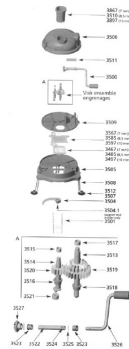
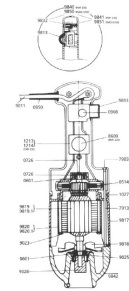
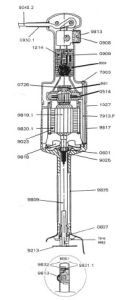
3508	Foot	12.67
3509	Intermediate Plate	72.00
3510	Pusher 8.5mm (Approx 5/16")	18.66
3511	Blockage Sheet and Screw	12.93
3512	Mounting Support (suction)	9.30
3513	Cutter Blade Axle	67.31
3514	Cutting Grid Axle with bearings	53.07
3515	Bushing 9/12/10	3.27
3516	Bushing C12/17/12	5.26
3517	Bushing 10/14/10	3.79
3518	Bushing C14/18/14	5.02
3519	Double Gear and Pin	15.99
3520	Right Gear and Pin	9.65
3521	Bearing	12.96
3522	Deep Axle	57.39
3523	Bushing (unit)	7.17
3524	Circlips (18)	6.37
3525	Handle Pin 4x18	1.92
3526	Crank Handle and Pin	45.66
3527	Cone Shape Gear & P	12.67
3528	Fastening Clips (qty 3)	5.62
3567	Upper Grid 7mm	98.00
3568	Upper Grid 14mm	98.00
3585	Upper Grid 8.5mm	98.00
3588	Upper Grid 17mm	98.00
3597	Upper Grid 10mm	98.00
3600	Screw on Button	8.91
3607	Smooth Cone Shaped Gear	10.58
3608	Pins	14.79
3609	Handle (Crank) Assembly	138.70
3610	Lower Plate with Screws	80.59
3611	Upper Cover Casing	101.00
3612	Pusher	16.96
3613	Blockage Sheet + Screws	9.98
3614	Deep Axle	48.20
3615	Roller Axle	7.78
3616	Support with Screws (2)	2.79
3617	Roller	4.21
3618	Disc Holder	88.58
3619	Cutter Pin	1.69
3620	Axle Assembly for Disc	90.23
3699	Disc Holder	79.76
3700	Fork	82.87
3867	Pusher 7mm (Approx 1/4")	18.66
3897	Pusher 10mm (Approx 3/8")	18.66
4001.1	Half Lower Handle	27.13
4002	Upper Motor Casing	22.76
4003	Foot Assembly with ball	119.07
4004	Cutter Blade	27.32
4005	Braces (4)	14.71



Mail to: P.O. Box 1690, Pleasanton, CA 94566

Ship to: 440 Boulder Court, Suite 100C, Pleasanton, CA 94566

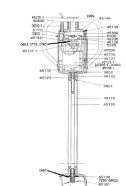
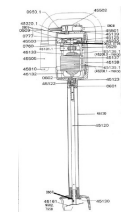
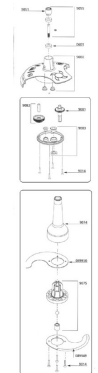
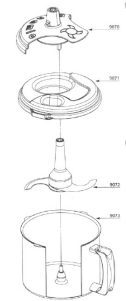
4006	Ball Bearing	4.18
4007	Coupling Sleeve	11.37
4008	Filtering Capacitor	15.00
4009	Emulsifying blade	38.54
4010.1	Complete Handle	105.99
4011.1	Half Lower Handle	27.13
4012	Filtering Capacitor	16.24
4013	Coupling	12.50
4014	Speed Variator Knob	12.50
4015	Lower Aluminum Motor Housing	107.74
4016	Foot Assembly with Ball	172.11
4017	Kit with Shaft Lower Ball	74.37
4018	Motor Ball Bearing sleeve	3.77
4019	Lower Motor Whisk Housing	112.06
4020	Equipped Upper Shaft	61.32
4021	Plate with Seals and Screw	36.34
4022	Holder Assembly Screws	3.94
4025	Reduction gear assembly	247.20
4030.1	Complete Handle	100.32
4031.1	Half Lower Handle	27.13
4040.1	Lower handle with label (115v)	27.07
4041	Lower aluminum motor housing	112.47
4042.1	Complete handle(115v)	117.21
4050.1	Motor brushes (2)(115v)	11.60
45110	Foot Assembly	363.15
45120	Shaft & Bearing	141.80
45122	Coupling Sleeve	22.63
45123	Sprocket	21.03
45125	Fan Housing Aluminum (no brushes)	132.00
45125P	Fan Housing Plastic (no brushes)	132.00
45126	Insulator	15.05
45130	Lower Bearing Assembly	33.76
45131	Brush Holder w/cap (1)	54.72
45131.1	Brush Holder w/bracket	54.72
45132	Lower Motor Casing	68.61
45133	Upper Motor Casing	68.61
45135	Motor Field (230v)	358.73
45135.1	Motor Field (115v)	358.73
45136	Motor armature (230v)	358.73
45136.1	Motor armature (115v)	358.73
45137	Screws for Motor Field (2)	2.59
45138	Spacers (4)	15.57
45139	Spacers Screws (4)	2.71
45144	ID Label	12.75
45161	Cutter Blade	38.85
45200.1	Motor (115v)	557.00
45200.1DSC	Motor (115v)	557.00
45200.2	Motor (230v)	557.00
45230	Pressure bushing(4)	5.76
45300.1	Top Housing	223.94



Mail to: P.O. Box 1690, Pleasanton, CA 94566

Ship to: 440 Boulder Court, Suite 100C, Pleasanton, CA 94566

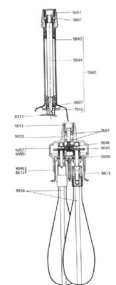
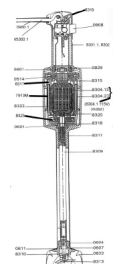
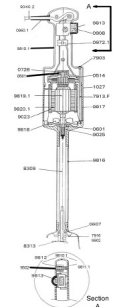
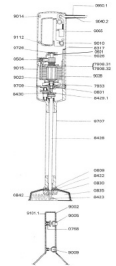
45320.1	Power Cord (115v)	33.00
45400	Complete Handle	201.00
45500	Sleeve	70.73
45501	Lower Switch Housing	17.11
45502	Upper Switch Housing	18.61
45503	Top Housing	207.86
45505	Sleeve & Complete	119.13
45510	Complete Switch Housing w/ Screw	32.75
45533	Kit w/ Shaft Lower Bearing	214.40
45600	Conversion Kit (SMX450)	307.47
45610	Handle Cap(2)	5.67
45620	Microswitch	122.67
45620.1	Microswitch	122.67
45630.1	Regulation circuit board	126.21
45632	Shaft for SMX600DSC	137.63
45633	Plastic Fan	16.70
45633DSC	Plastic Fan	16.07
45706	Top Switch Housing	18.61
45706.1	Screws control case set	1.95
45707	Lower Switch Housing	17.11
45708	Lock Button Cover	3.05
45709	Sleve & Complete Housing	118.50
45709DSC	Top Motor Housing	206.78
45710	Switch Button Cover	2.89
45711	Lower Housing with Screw	33.04
45712.1	Complete control casing (115v)	196.00
45720	Foot Assembly	360.50
45720.1	Foot assembly	361.24
45721	Locking Kit	290.46
45722	Complete Foot Assembly	545.26
45722.1	Complete foot	545.26
45810	Perforated Disk	56.29
45820	Perforated Disk w/ Pin	56.29
45830	Sleeve & Complete	119.13
45831	Lower Motor Housing	320.60
45832	Foot Assembly	368.71
45833	Shaft and Bearing	145.23
45834	Kit w/ Shaft Lower Bearing	236.57
45835	Motor Armature (230v)	359.00
45835.1	Motor Armature (115v)	359.00
45836	Motor Complete (230v)	557.00
45836.1	Motor Complete (115v)	557.00
45840	Complete Foot Assembly	557.00
45900	Plastic Holder for Tub	79.24
45901	60 mm - Bracket	64.12
45902	20 mm - Bracket	43.38
46001	Sleeve, handle, label, cap	118.50
7010	End Caps (Long)	15.07
7070	End Caps (Short)	13.17
7580	Circlips	0.43



Mail to: P.O. Box 1690, Pleasanton, CA 94566

Ship to: 440 Boulder Court, Suite 100C, Pleasanton, CA 94566

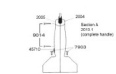
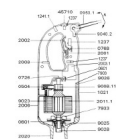
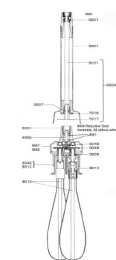
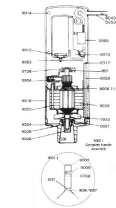
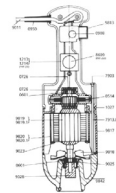
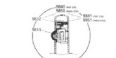
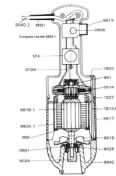
7840	Fork	0.48
7850	Wing Nut	0.46
7901	Complete handle	42.44
7901.1	Complete Handle	45.33
7903	Spacer screws (4)	4.32
7904.M1	ID sheet (115v)	45.73
7905	Motor housing brush holder	39.76
7907	Wall bracket	21.74
7908.1	Motor (115v)	354.92
7908.11	Motor armature - Old	212.18
7908.12	Motor armature (230v)	212.18
7908.21	Motor field (115v)	223.63
7908.31	Motor armature (115v)	212.18
7908.4	Motor (115v)	354.92
7910	Emulsifying blade	56.17
7911.M1	Power cord (115v)	27.00
7911F.1	Power Cord (115v)	33.04
7912	Motor bearing sleeve	3.52
7913 M	Spacers (4)	15.01
7913.F	Spacers (4)	15.01
7913M	Braces (4)	15.01
7914	Foot assembly w/ lower	280.16
7915	Shaft & coupling sleeve	69.78
7916	Lower bearing assembly	33.39
7917	Cutter blade	36.00
7918	Plate assy w/3 Bronze Srews	40.46
7919	Middle Gear & Shaft	96.67
7920	Output Gear & Shaft	54.79
7921	Variable Speed Control	117.82
7921.1	Speed Control Plug	11.27
7922	Holder Assembly w/3 Bronze Srews	40.52
7923	Plastic Protector	14.26
7924F	Lower Housing	99.03
7925	Whisk (2)	138.42
7931	Capacitor	11.79
7933	Fan	8.48
7934	Shaft lower bearing Seal	120.21
7938	Top handle	17.27
7950	Lower bearing screws (3)	1.09
79929	Motor Screws	1.09
79933	Connecting Rod Concave	0.37
79934	Fork Concave Washer	0.37
79935	Brake Nut Washer	0.06
79936	Fork Axle	0.06
79937	Blade Plastic Washer	0.37
8301.1	Complete handle (115v)	70.73
8302	Handle only w/screws	38.69
8303.2	Power cord (115v)	33.04
8304.1	Motor (115v)	388.97
8304.13	Motor armature (115v)	224.68



Mail to: P.O. Box 1690, Pleasanton, CA 94566

Ship to: 440 Boulder Court, Suite 100C, Pleasanton, CA 94566

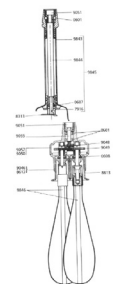
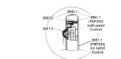
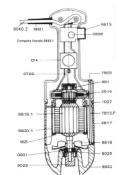
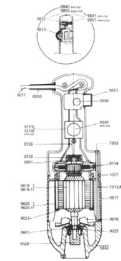
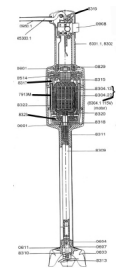
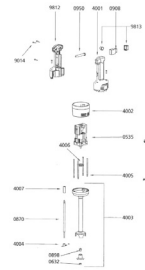
8304.23	Motor field (115v)	224.68
8309	Shaft	69.77
8310	S.S. lower bearing assembly	116.16
8311	Motor & shaft housing	189.83
8313	Cutter blade	35.26
8315	Upper motor casing	47.75
8317	Spacers screws (4)	4.32
8318	Lower motor casing	12.28
8319	Switch cover	9.21
8320	Deflector	8.48
8321	Ground wire	5.16
8322	Screws w/ground washer	0.80
8323	Fan	8.48
8422	Anti-friction Washer	15.77
8423	Lower Nut for blade	29.99
8428	Out Shaft w/ Gear	142.57
8429	Double Gear with Washer	112.62
8430	Single Gear & Shaft	117.83
8601	Complete handle w/slot	117.83
8601.1	Complete handle w/slot	117.83
8602	Handle only w/screws	38.69
8608	Variable speed control	92.29
8609	Variable speed control	12.99
8612	Holder + plastic ejector (whip)	60.71
8613	Plastic ejectors (pair)	25.91
8615	Whip only (pair)	138.42
8830	Fork Axle	18.96
8840	Connecting Rod Axle	3.58
8850	Brake Axle	9.82
8860	Thickness Wedge	7.15
8890	Connecting Rod	11.64
8910	Knife Blade	149.08
9000.1	Complete Handle (115v)	226.32
9001	Half Handle Label Side	53.42
9001.1	Half Handle Label Side	53.42
9002	Half handle button side	52.09
9004	Kit-Shaft lower bearing	159.27
9005	Safety button	2.81
9007	Lock button	2.70
9008.11	Motor (115v)	212.18
9008.11DSC	Motor (115v)	212.18
9008.12	Motor (230v)	212.18
9009	Plug (deactivates switch)	2.81
9010	Control lever	12.23
9011	Power cord (230v)	20.56
9011.1	Power cord (230v)	30.50
9012	Variable speed control knob	3.79
9013	Variable Speed Control board	89.54
9014	Handle screws (4)	0.62
9015	Motor housing brush holder	70.53



Mail to: P.O. Box 1690, Pleasanton, CA 94566

Ship to: 440 Boulder Court, Suite 100C, Pleasanton, CA 94566

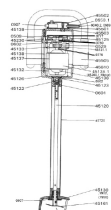
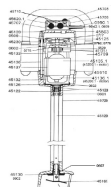
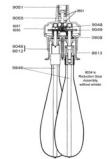
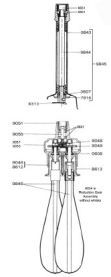
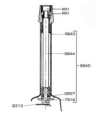
9023	Field spacer screws (2)	3.52
9024	Lower aluminum housing	125.76
9025	Motor Bearing Sleeve	4.07
9026	Spacers (4)	15.01
9028	Coupler for armature	8.86
9031	Shaft	117.83
9034	Reduction gear assembly	274.76
9038	Motor field (115v)	188.60
9040	Power cord (2 wire) (1)	21.86
9040.1	Power Cord (115v)	33.50
9040.2	Power Cord (115v)	21.86
9044	Capacitor	19.96
9044.1	Capacitor	19.66
9046	Lower casing w/o middle	227.81
9048	Central double gear &am	96.68
9049	Single gear (2)	79.20
9050	Upper plastic casing	80.19
9051	Coupler for armature	14.08
9053	Variable Speed Control	89.59
9054	Reducing Casing	78.98
9055	Equipped upper shaft	66.77
9057	Complete upper casing	104.18
9059	Wall bracket	43.37
9060	Foot Assembly	295.20
9062	Main Shaft	150.87
9064	Reduction Casing Screws	3.66
9065	Upper Plastic Casing	104.18
9070	Adaptator	218.52
9071	Cover	76.49
9072	Knife Assembly	89.60
9073	Dynacutter Bowl Only	177.55
9074	Knife Cone Support	33.29
9075	Inner Assembly	16.64
9076	Bowl Pivot	15.09
9077	Handle	25.99
9078	Handle Screws	3.32
9080	Adaptor Seal Sticker	89.47
9081	Output Shaft with Gear	43.69
9082	Middle Gear and Shaft	73.88
9083	Complete Adaptor base	35.36
9100	Complete handle w/ power	150.77
9100.1	Complete handle w/ power	150.77
9101	Half handle label side	54.51
9101.1	Half handle label si	54.51
9112	Speed control plug	1.92
9129	Complete foot assembly	361.89
9130	Foot assembly w/ bearing	257.56
9131	Fitted shaft	69.77
9143	Ground wire (115v)	8.86
9164	Kit-Shaft lower bearing	123.46



Mail to: P.O. Box 1690, Pleasanton, CA 94566

Ship to: 440 Boulder Court, Suite 100C, Pleasanton, CA 94566

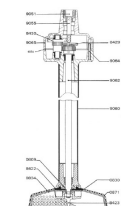
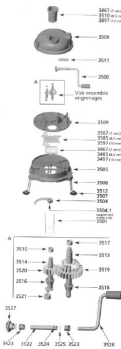
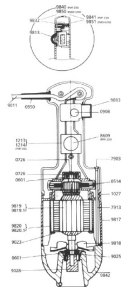
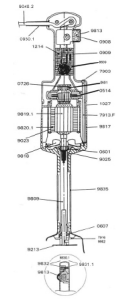
9209	Shaft	68.37
9210	S.S. Lower bearing assembly	116.16
9211	Motor & shaft housing	189.83
9213	Cutter blade	35.26
9219	Variable speed control	92.29
9230a	Whisk 300mm	441.93
9230b	Whisk 400mm	454.11
9230c	Whisk 120mm	421.81
9231	Main shaft	279.53
9232	Lower carter	165.18
9233	Handle and casing	75.61
9240	casing, bearing seal, tube, lever assembly	179.09
9241	Exit shaft	198.91
9250	Complete reduction box w/o bowl, wisk, or handle	540.69
9301	Wheel with Brake	152.03
9303	Front Hood	109.18
9306	Hood Screw w/ Plastic W	0.85
9307	Switch /x Control Box	394.87
9307.1	Switch /x Control Box	394.87
9308	Back Hood	120.78
9310	Motor Pulley	340.36
9311	Squeezing Handle	255.46
9312	Level Adjustment Handle	69.44
9314	Shaft Pulley	236.26
9316	Foot Assembly	1,502.93
9317	Main Shaft	250.84
9318	Lower Shaft	292.64
9322	Cutter Blade	232.25
9325	Rubber Holders (3)	149.72
9326	Fork	799.55
9327	Frame	1,858.11
9328	Front Wheel	71.00
9401	Handle label side	40.08
9401.1	Handle label side	40.08
9402	Upper handle	40.08
9404	Clips (2)	5.47
9407	Spacers (4)	12.32
9408	Motor	91.24
9409	Fan	6.24
9410	Motor holder & screw	5.46
9411	Main shaft	11.51
9412	Foot assembly	126.31
9414	Emulsifying Blade	31.86
9415	Cutter blade	21.22
9416	Spacers	12.32
9417	Motor & gear	112.76
9418	Whip box	66.57
9420	Middle gear & axel	80.19
9421	Output axel	76.30
9422	Holder assembly w/seals	40.52



Mail to: P.O. Box 1690, Pleasanton, CA 94566

Ship to: 440 Boulder Court, Suite 100C, Pleasanton, CA 94566

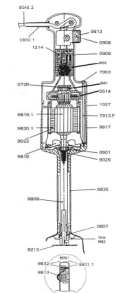
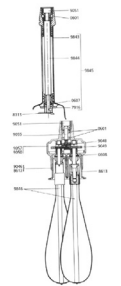
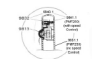
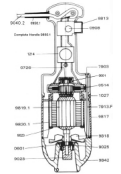
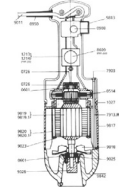
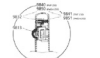
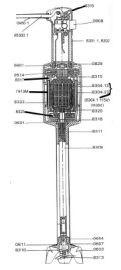
9424	Whip (pair)	73.06
9430.1	Complete handle	80.21
9431	Complete handle	80.21
9501.1	Power cord (115v)	18.88
9502	Handle Screws (3)	0.58
9503	Lower handle w/label	43.82
9503.1	Lower handle w/label	43.82
9504	Upper handle(button side)	43.38
9505.1	Complete handle	98.10
9506	Spacers (4)	12.32
9507	Motor & screw &	89.12
9507.1	Motor & screw &am	89.12
9508	Coupling sleeve	8.69
9509	Inner motor holder	11.08
9510	Tube w/bearing assembly	89.54
9512.1	Carbon Brushes	12.50
9601	Motor Holder	33.04
9602.1	Power Cord (115v)	47.14
9603	Motor w/ Capacitor	372.71
9603.1	Motor w/ Capacitor	372.71
9604	Uppr Ring	35.35
9605	Top Orange Container	70.73
9606	Cone	23.05
9607	Base	70.73
9700.1	Complete Handle (115v)	150.56
9702	Lower aluminum housing	138.60
9704	Middle gear & shaft	94.76
9705	Output gear & shaft	87.93
9706.1	Complete handle (115v)	226.32
9707	Complete Foot Assembly	367.76
9708	Power cord (230v)	28.00
9708.1	Power cord (115v)	28.00
9709	Plate w/ 2 Seals	29.76
9710	Half handle label side	53.42
9710.1	Half handle label side	53.42
9711	Plate w/ 3 seals	32.42
9712	Holder without gear	227.81
9713	Variable speed control	90.64
9730	Half Handle Label Side (230v)	53.42
9740	Half Handle Label Side (115v)	53.42
9753	Variable speed control	90.64
9760	Half lower handle w/label (230v)	53.23
9760.1	Half lower handle w/label (115v)	53.23
9761	Lower motor housing	466.83
9762	Exit shaft w/ gear	114.27
9764	Aluminum carter, foot, seals	153.20
9765.1	Complete handle with cord (115v)	150.10
9766	Casing, shaft, bearing seal, ball bearing, rubber ring	150.10
9801	Half handle label side	43.82
9801.1	Half handle label side	43.82



Mail to: P.O. Box 1690, Pleasanton, CA 94566

Ship to: 440 Boulder Court, Suite 100C, Pleasanton, CA 94566

9802.1	Complete handle (115v)	155.64
9803	Motor holder	10.77
9804.1	Motor (115v)	95.66
9805	Whip (pair)	71.02
9806	Variator Knob	3.82
9809	Shaft	68.37
9810.1	Complete handle (115v)	62.30
9811	Half lower handle w/label	27.13
9811.1	Half lower handle w/label	27.13
9812	Half upper handle	24.35
9813	Switch protector	8.03
9816	Motor & shaft housing	142.24
9817	Upper motor casing	41.52
9818	Fan	9.58
9819.1	Motor armature (115v)	224.68
9820.1	Motor Field (115v)	224.68
9821	Complete foot assembly	271.92
9830	Complete handle w/slot	117.83
9830.1	Complete handle w/slot	117.83
9831	Half lower handle label	27.13
9831.1	Half upper handle	27.13
9832	Half handle - Button Side	24.35
9835	Motor & shaft housing	142.24
9836	Shaft lower bearing &am	117.83
9837	Shaft lower bearing &am	117.83
9838	Complete foot assembly	249.89
9840.1	Complete handle (115v)	117.83
9841	Half lower handle w/label	27.13
9841.1	Half lower handle w/label	27.13
9842	Aluminum housing	124.94
9843	Foot Assembly	117.42
9844	Shaft & coupling sleeve	150.38
9845	Shaft lower bearing	135.96
9846	whisk (2)	132.06
9850.1	Complete Handle (115v)	62.30
9851.1	Half Lower Handle (115v)	27.13
9900.1	Complete handle (115v)	150.56
9901	Foot Assembly	195.19
9902	Lower bearing screws (3)	1.09
9903.1	Half handle (115v)	53.42
AC010	Inside Basket	88.95
AC100.1	Complete motor block	400.00
AC151	Dynacoupe slicing disc 1.5mm (Approx 4/64")	49.17
AC152	Dynacoupe slicing disc 2.0mm (Approx 5/64")	49.17
AC153	Dynacoupe slicing disc 3.0mm (Approx 1/8")	49.17
AC155	Dynacoupe slicing disc 5mm (Approx 3/16")	49.17
AC162	Dynacoupe shredding disc 2.0mm (Approx 5/64")	49.17
AC163	Dynacoupe shredding disc 3.0mm (Approx 1/8")	49.17
AC164	Dynacoupe shredding disc 4.0mm (Approx 5/32")	49.17
DCGS100	grid set with pusher, 10.0mm	186.43





Dynamic Mixers, Cutters, & Spinners
Santos Juicers, Cutters, & Grinders
füri Knives & Sharpeners
Sales, Parts, & Service

Phone: (925) 417-0617
Fax: (925) 417-0372
Email: Novon2@earthlink.net
www.DynamicMixerParts.com

Mail to: *P.O. Box 1690, Pleasanton, CA 94566*

Ship to: *440 Boulder Court, Suite 100C, Pleasanton, CA 94566*

DCGS140	grid set with pusher, 14.0mm	186.43
DCGS170	grid set with pusher, 17.0mm	186.43
DCGS70	grid set with pusher, 7mm	186.43
DCGS85	grid set with pusher, 8.5mm	186.43
P2802	Inside Basket	86.36